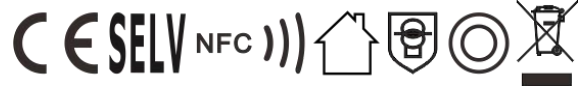




Constant Current Driver

Model:RC18W150-700 NFC



Model	Input Current	Input Power	Output Power Range	PF	Efficiency	Output Current	Output Voltage	No load Voltage
RC18W150-700 NFC	≤0.13A	22W	0.375-18W	≥0.92	85%	150-700mA	2.5-45V	60V

* Test result @230V, 50Hz, Full Load.

1. Parameters

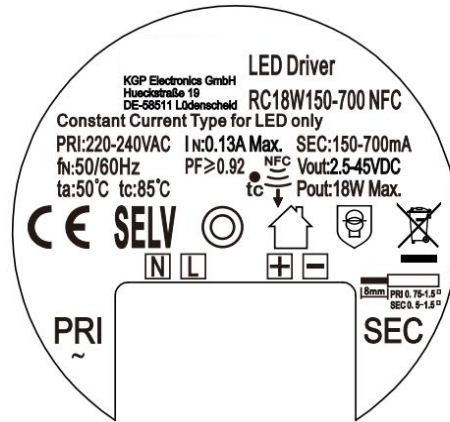
Category	Item	Technical Norm
Features	Output Type	Constant Current
	IP Grade	IP20
	Current Setting	Near field communication (NFC)
	Output Features	Isolation
	Insulation Class	Class II
Input	Rated Input Voltage	220-240VAC
	Range of Input Voltage	198-264VAC
	Frequency	50/60Hz
	Input Current	≤0.13A(230VAC, full load)
	Input Power	≤22W(230VAC, full load)
	Power Factor	≥0.92(230VAC, full load)
	THD	≤15%(230VAC, full load)
	No-load Power Consumption	≤0.5W
Output	Current Accuracy	±5%
	Max. Output Power	18W
	Current Ripple(< 120 Hz)	±5%(Imax-Imin)/(Imax+Imin)
	PstLM	≤1
	SVM	≤0.4
	Started Delay Time	≤0.5S(230VAC, full load)
	Output Voltage	2.5-45VDC@150-400mA 2.5-40VDC@450mA 2.5-32VDC@500-550mA 2.5-28VDC@600-650mA 2.5-25VDC@700mA
Control Method	NFC current setting	The output current can be set within the total value range in 1-mA-steps.Output current is mean value.Setting is by KGP's software APP/APK/PC with FEIG equipment or mobile phone.
Protection	Short Circuit Protection	Auto Recovery

	Overload Protection	Auto Recovery
	No-load Protection	Auto Recovery
	Insulation voltage	I/P to O/P , 3KVac/1min
	Insulation resistance	>100M ohm @ 500VDC
	Leakage current	< 700pA, I/P to O/P or I/P to PE @230V input
Environment	Ta/Operation Temperature	-20....+50 C°
	Ts/Storage Temperature	-20....+85 C°
	Tc/Enclosure Temperature	85 C°
	Humidity	10%....90%RH
	Atmospheric pressure	86-108KPa
Construction	Connection Method	Push-in Terminal
	Installation	Built-in
	PRI Wire preparation	0.5-1.5mm ² / 8-9mm
	SEC Wire preparation	0.5-1.5mm ² / 8-9mm
	Dimension	φ55*25mm (R*H)
Standards	Certification	CE
	Safety Standards	EN61347-1:2015,EN61347-2-13:2014/A1:2017,EN62493:2015, AS/NZS IEC61347.2.13:2013, AS/NZS 61347.1:2016 Inc A1
	EMC Standards	EN55015:2013/A1:2015,EN61000-3-2:2014, EN61000-3-3:2013,EN61547:2009
	Performance	EN62384
	Surge	L-N/1KV
Others	RoHS	complied to 2011/65/EU
	Life Time	50000h @50 C° (Ta) / 85 C° (Tc)
	Warranty	5years, F.R.<10000ppm
	Noise	≤ 24dB@Background noise ≤18dB , Interval ≥15cm
<p>Remark:</p> <p>1.All Parameters, if not specified, are measured at 230VAC/50Hz and 25 C° ambient temperature.</p> <p>2.LED Driver is a component of the luminaires, Luminaires and wire layout will affect the EMC, please check the EMC with end products again.</p>		

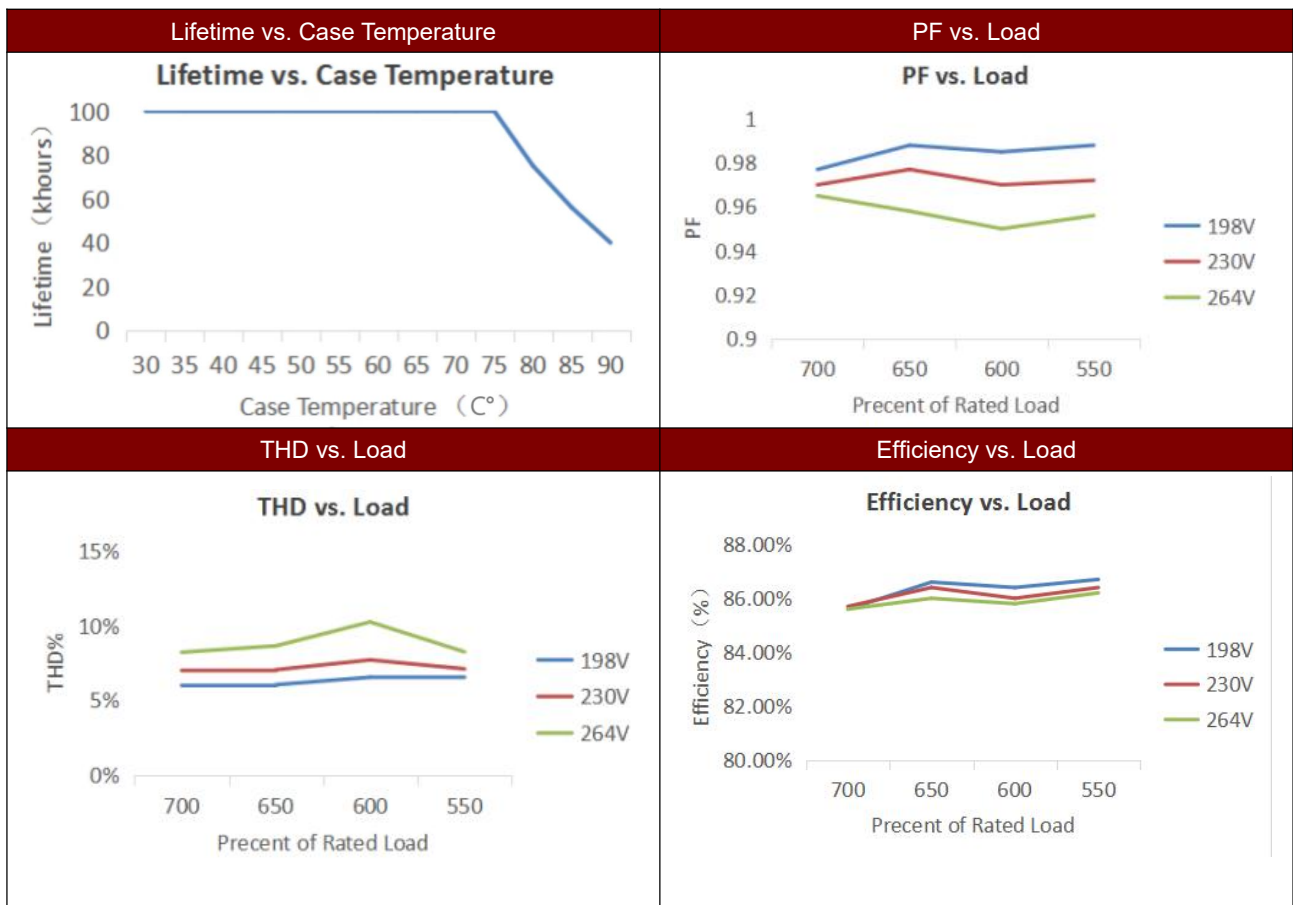
2. Connected quantities of different circuit breaker

TYPE	Connected quantities of different circuit breaker						Input Voltage	Inrush Current	Time
	current (A)	10	13	16	20	25			
	Installation wire diameter	1.5mm ²	2.5mm ²	2.5mm ²	4mm ²	4mm ²			
TYPE B		13	17	21	27	33	@230VAC	45	4µs
TYPE C		21	28	34	43	53			
TYPE D		34	44	55	68	85			

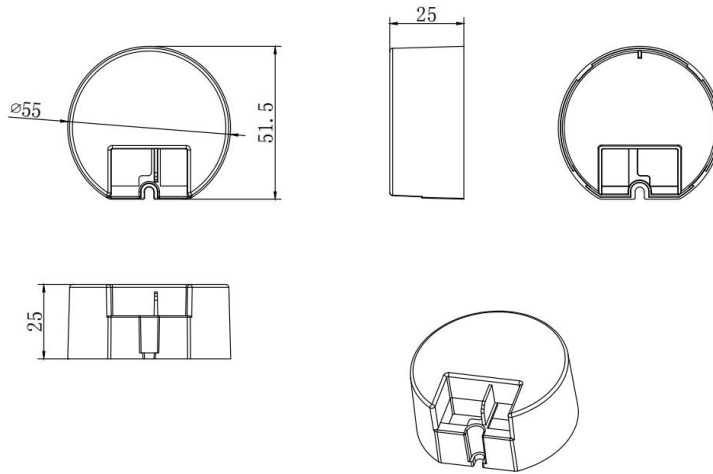
3. Label



4. Electrical values



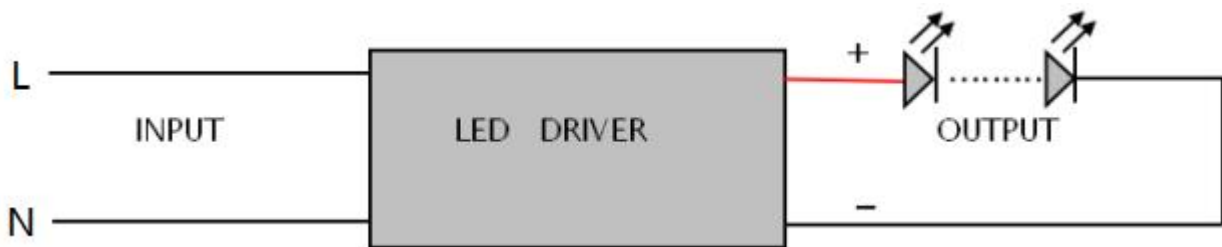
5. Dimension



6. Packing information

Packing way	Model	Carton L*W*H(mm)	Pcs/Carton	Netweight/ Pcs(kg)	Net weight/ Carton(kg)	Gross weight/ Carton(kg)
Industrial	RC18W150-700 NFC	370*185* 245	100	0.071	7.1	7.73

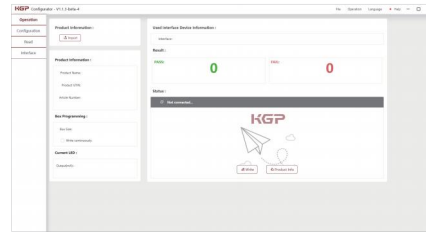
7. Wiring Diagram









8. Wiring instructions

- All connections must be kept as short as possible to ensure good EMI behaviour
- Mains leads should be kept apart from LED Driver and other leads (ideally 5-10cm distance)
- Advice the maximum length of output wires is 3m
- Secondary switching is not permitted (Except for constant voltage)
- Incorrect wiring can damage LED modules
- The wiring must be protected against short circuits to earth (sharp edged metals parts, metal cable clips, louver, etc.)

9. NFC current setting:



Product	Description	Interface	Matching antenna	Zhaga approval	Usage
 ID CPR30+	Desktop programmer	USB	Integrated	Yes	Single Programming on Desktop
 ID ISC.PRH101-USB	Handheld programmer	USB	Integrated	Yes	Single Programming by Handheld
 ID ISC.MR102-USB	Middle range programmer, for connecting external antenna	USB	RF-MANT12786 	Yes	Single Programming on Product line
 ID ISC.LR1002-E	Long range programmer, for connecting external antenna	USB,RS232,TCP/IP	ID ISC.ANT310/310 	Yes	Multi Programming System

APP NFC

Feature:

Quickly check output current of a LED driver simply via iPhone smart phone, as well as, correct or setup a new current data immediately with no extra equipment at any job site.

ICON



Main

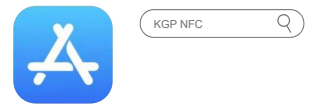


Download method

1.Scan the QR co to download




2.On your iPhone, sear for KGP NFC in APP Store to download it



iPhone smartphones with NFC can be downloaded and used directly

An iPhone smartphone without NFC requires the following devices to use it

Product	Description	Interface	Matching antenna	Zhaga approval	Usage
 ID ECCO Smart HF-BLE	Handheld wireless programmer	USB,Bluetooth LE V4.2 & V5.0	Integrated	Yes	Handheld programming, installation and maintenance work

10 .REVISION HISTORY

DATE	VER	REMARK
2023-11-02	V1.0	Initial release
2024-05-17	V1.1	Update parameters